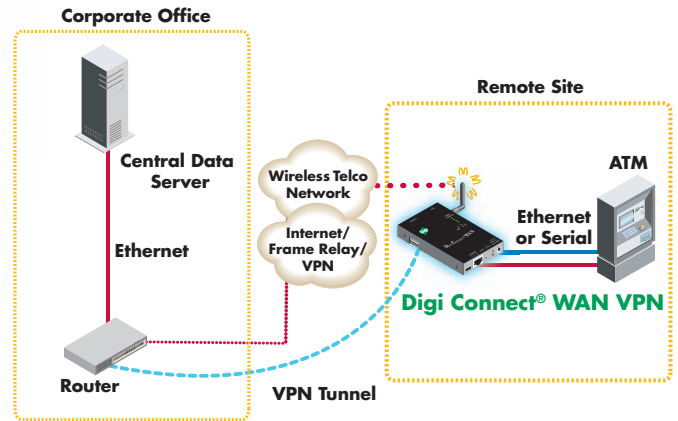


Digi Connect® WAN Family

Cellular Gateways/Routers/VPN Devices

Cellular routers, gateways and VPN devices provide high performance wireless TCP/IP data communications via cellular GSM/CDMA networks, for primary and backup connectivity to remote sites and devices.



Features/Benefits

- Hardware suite includes cellular gateways, routers and VPN devices
- GSM GPRS/EDGE/UMTS/HSDPA or CDMA 1xRTT/EV-DO network for reliable wireless network connectivity
- Unique Digi SureLink™ "always-on" connection maintains wireless connection for rapid on-demand communications
- 10/100Base-T Ethernet and serial connections
- 9-30VDC for diverse power input
- Web interface for easy centralized console configuration and statistics
- Integrates with Digi Connectware Manager for seamless management and monitoring of hundreds or thousands of devices
- Up to 256-bit AES security provides encryption and authentication for management communications via Digi Connectware Manager
- Specialized models for industrial and synchronous applications

Overview

The Digi Connect WAN family of commercial-grade Wireless WAN cellular routers, gateways and VPN appliances provides secure high-speed wireless connectivity to remote sites and devices. Digi Connect WAN cellular products can be used for reliable primary wireless network connectivity to equipment at remote locations, as well as for a backup to existing landline communications. They are also ideal for use where wired networks (e.g., leased line/frame relay, ISDN, DSL) are not feasible, or where alternative network connections are required.

Digi Connect WAN products are able to provide a primary Wireless WAN connection to remote sites containing Ethernet and/or serial devices. Applications include new construction locations, power utility substations, retail/POS sites, temporary facilities without primary wired connections, and many more.

For backup network applications, Digi Connect WAN cellular products integrate with remote locations via a secondary Ethernet WAN port on an existing router. This provides a truly diverse network connection for remote locations requiring maximum uptime, such as retail/POS and financial applications.

Digi SureLink is a unique feature that provides a "persistent connection" over wireless networks by utilizing a three-way client and server initiated scheme. All Digi Connect WAN cellular products seamlessly integrate with Digi Connectware® Manager, which provides easy setup, configuration and maintenance of large installations. Users can upgrade firmware or change settings on thousands of devices with only a few clicks. It also makes troubleshooting simple by reporting problems like identifying misbehaving devices or network issues.

Features Comparison

Digi Connect WAN

2.5G Wireless WAN cellular router. Provides high performance wireless TCP/IP data communications via cellular GSM EDGE and CDMA 1xRTT networks to remote sites and devices.

Digi Connect WAN 3G

3G high speed upgradeable HSDPA/EV-DO Rev A Wireless WAN cellular router with integrated VPN. Provides primary and backup connectivity to remote sites and devices.

Digi Connect WAN GPRS

2G Wireless WAN cellular router/gateway. Provides reliable GPRS wireless TCP/IP data communications via cellular. Ideal for M2M applications.

Digi Connect WAN VPN

2.5G Wireless WAN cellular router plus integrated VPN. Creates a secure WAN connection via an Ethernet-to-cellular interface.

Digi Connect WAN IA

Industrial-grade 2.5G Wireless WAN GSM/CDMA router/gateway. Offers all of the functionality of Digi Connect WAN VPN plus an industrial-grade feature set.

Digi Connect WAN Sync

2.5G Wireless WAN cellular router with support for legacy synchronous serial devices. Connects to remote synchronous devices, such as ATMs, using standard GSM/CDMA networks.

	Digi Connect® WAN	Digi Connect® WAN GPRS	Digi Connect® WAN 3G	Digi Connect® WAN VPN	Digi Connect® WAN IA	Digi Connect® WAN Sync
Interfaces						
Serial Port Type	RS-232/422/485	RS-232/422/485	RS-232/422/485	RS-232/422/485	RS-232/422/485	Synchronous
10/100 Ethernet	•	•	•	•	•	•
USB Port			•			
Sensor Port			•			
GSM GPRS 12/EDGE 12 -or- CDMA 2000 1xRTT	•	GPRS Only	•	•	•	•
UMTS/HSDPA & EV-DO Rev A			•			
Routing						
NAT, NAT-T, Port Forwarding, DHCP Server/Client, VPN Pass-Through, Firewall - IP Filtering, VRRP	•	•	•	•	•	•
Security						
SSL, SSHv2, FIPS 197, HTTPS	•	•	•	•	•	•
Integrated IPsec VPN			•	•	•	•
Management						
Built-in Web Interface and Command Line Interface	•	•	•	•	•	•
Digi Connectware® Manager	•	•	•	•	•	•
Special Features						
Digi SureLink™	•	•	•	•	•	•
RealPort® Virtual COM Ports	•	•	•	•	•	•
Bisync Protocol with 3270/3275 Emulation						•
DIN Rail Mountable	•	•	•	•	• Kit Included	•
Terminal Block for Power, Modbus Support, Class 1, Div 2					•	

Features/Specifications

FEATURES

- Easily accessible SIM
 - Network protocols
 - UDP/TCP, DHCP
 - Status LEDs
 - Ethernet, power on, cellular link/activity, signal strength
 - Patented RealPort for COM ports and RFC 2217
- #### Router/Firewall Features
- NAT
 - Port forwarding
 - VPN/GRE pass-through
 - Access control lists (IP filtering)

Security

- SSL, SSHv2, FIPS 197

VPN Features

- **Not included on**

Digi Connect WAN GPRS

- IPsec with IKE/ISAKMP
- Multiple tunnel support
- DES, 3DES and AES up to 256-bit encryption

IA Features

- **Digi Connect WAN IA**

- DIN rail mounting kit included
- Class 1, Div 2 rating
- Terminal block for power
- Modbus to ModbusTCP protocol conversion

Sync Features

- **Digi Connect WAN Sync**

- Bisync protocol with 3270/3275 emulation

RF Features

- **GSM GPRS Models**

- GPRS multi-slot class 12

- **GSM EDGE Models**

- Network: Quadband 1900/850 and 1800/900 MHz GSM GPRS/EDGE
- Transmit frequency: 1850-1910 MHz and 824-849 MHz
- Receiver frequency: 1930-1990 MHz and 869-894 MHz
- GSM GPRS class 12/ EDGE class 12
- Throughput up to 240 Kbps, 100-130 Kbps typical
- RF antenna connector: 50 Ohm SMA

- **CDMA 1xRTT Models**

- Network: 800 MHz CDMA cellular: 1900 MHz CDMA PCS 1xRTT
- Transmit frequency: 1851-1909 MHz and 824-849 MHz
- Receiver frequency: 1931-1989 MHz and 869-894 MHz
- Throughput up to 153 Kbps, 60-80 Kbps typical
- RF antenna connector: 50 Ohm SMA

- **GSM UMTS/HSDPA Models**

- PCI Express Module
 - UMTS: 850/1900/2100 MHz
 - HSPA: 850/950/1800/1900 MHz
 - External 50 Ohm female SMA connector

FEATURES (CONT.)

- **CDMA EV-DO Rev A Models**

- EV-DO PCI Express Module - Sprint, Verizon
 - Dualband 800/1900 MHz with RX Diversity
 - 2 external 50 Ohm female SMA connectors

Management

- HTTP and CLI for web management
- Optional secure enterprise management via Digi Connectware Manager

INTERFACES

Ethernet

- Connector: RJ-45
- Standard: IEEE 802.3
- Physical Layer: 10/100Base-T
- Data rate: 10/100 Mbps (auto-sensing)
- Mode: full or half duplex (auto-sensing)

Serial

- RS-232/422/485
- Sync/Bisync port (Digi Connect WAN Sync only)
- Throughput up to 230 Kbps
- Full signal support for TXD, RXD, RTS, CTS, DTR, DSR and DCD
- Hardware and software flow control
- Can provide diverse out-of-band console management for network devices like routers and switches

Other Interfaces (3G Model only)

- 1 USB Type A connector
- 1 sensor port (for use with Watchport Sensors)

ENVIRONMENTAL

- Operating temperature: -30° C to 70° C (-22° F to 158° F) for GSM models
- Operating temperature: -30° C to 60° C (-22° F to 140° F) for CDMA models
- Relative humidity: 5% to 95% (non-condensing)
- Ethernet isolation: 1500VAC min per IEEE802.3/ANSI X3.263
- Serial port protection (ESD): +15 kV Air 6 AP and +8 kV contact discharge per IEC 1000-4-2

WIRELESS CARRIER CERTIFICATIONS

- Certified by most major carriers. Please see www.digi.com for current listing.

POWER REQUIREMENTS

- Power input: 9-30VDC
- 12VDC power supply for 0° C to 60° C (32° F to 140° F) included; extended temperature available
- DC power consumption
 - Idle: 1.2 W
 - Max: 3.4 W
- AC power consumption
 - Idle: 2.0 W
 - Max: 5.8 W
- Surge protection (with included power supply)
 - 4 kV burst (EFT) per-4-4
 - 2 kV surge per EN61000-4-5 (non-condensing)

REGULATORY APPROVALS

Mobile Certifications

- **GSM Models**

- PTCRB, NAPRD.03
- GCF-CC
- R&TTE, EN 301 511

- **CDMA Models**

- CDG TIA/EIA-690
- CDG TIA/EIA-98-E

Safety

- UL 60950
- CSA 22.2 No. 60950
- EN60950

Emissions/Immunity

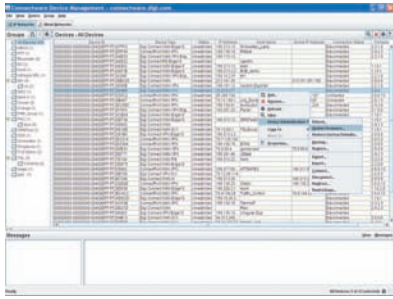
- CE
- FCC Part 15, Class A (FCC identifier GGL-R1902G)
- AS/NZS CISPR 22
- EN55024
- EN55022, Class A

DIMENSIONS

- Width: 3.35 in (8.51 cm)
- Height: 0.97 in (2.47 cm)
- Length: 5.25 in (13.34 cm)
- Weight: 1.00 lb (0.45 kg)

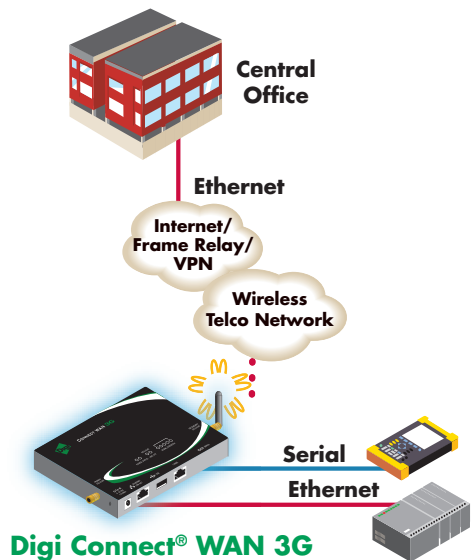


Digi Connectware Manager



Manage many devices at the same time with just a few clicks

Digi Connectware Manager is an enterprise remote device management software that runs on a customer's central server and can be managed via web interface from anywhere. Administrators have access to one or thousands of devices for management, monitoring, alerts and troubleshooting. Includes built-in Dynamic DNS server for mapping an Internet host name to a dynamic/public IP address.



MODEL.....PART NUMBERS

GSM Models

Digi Connect WAN 3G – Cellular ready
 Digi Connect WAN 3G (Generic HSDPA)
 Digi Connect WAN 3G (HSDPA)
 Digi Connect WAN GSM
 Digi Connect WAN VPN GSM
 Digi Connect WAN IA GSM
 Digi Connect WAN Sync GSM

North America International

DC-WAN-T300-A N/A
 DC-WAN-T301-A DC-WAN-T301-W
 DC-WAN-T302-A DC-WAN-E309-W
 DC-WAN-GE10A DC-WAN-GE10A-W
 DC-VPN-GE10A DC-VPN-GE10A-W
 DC-WAN-F501 DC-WAN-F501
 DC-WAN-K401 N/A

GPRS Models

Digi Connect WAN GPRS

DC-WAN-A101-A DC-WAN-A101-W

CDMA Models - North America Only

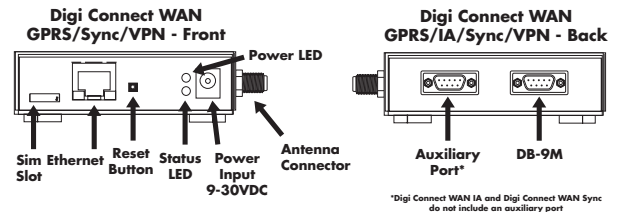
Digi Connect WAN 3G (EV-DO Rev A)
 Digi Connect WAN CDMA
 Digi Connect WAN VPN CDMA
 Digi Connect WAN IA CDMA
 Digi Connect WAN Sync CDMA

Sprint	Verizon	Alltel
DC-WAN-T310-A	DC-WAN-T311-A	TBD
DC-WAN-S1XA	DC-WAN-D111	DC-WAN-D116
DC-VPN-S1XA	DC-WAN-D311	DC-WAN-D316
DC-WAN-G510	DC-WAN-G511	DC-WAN-G516
DC-WAN-M410	DC-WAN-M411	TBD

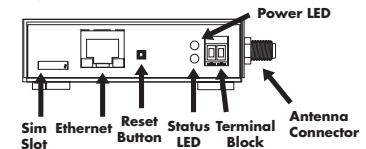
Antennas

Dual Band 2" Monopole Antenna
 Dual Band Desktop 2.8"
 Antenna with 8 ft. Cable
 Dual Band Dipole 7" Antenna
 Dual Band High Gain 14"
 Antenna with Magnetic Mount
 Extended Temperature Power Supply
 12VDC Locking Barrel Extended Temperature
 Hardened Power Supply
 DB-9F to DB-9F Crossover Cable (4 ft.)
 DIN Rail Mounting Bracket
 48VDC to 12VDC Power Converter
 Watchport/V3 USB Camera

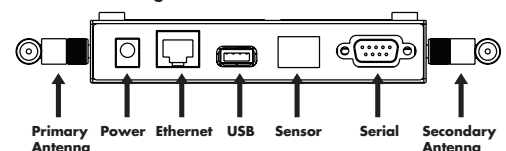
North America	International
DC-ANT-DBMP	DC-ANT-DBMP-W
DC-ANT-DBDT	DC-ANT-DBDT
DC-ANT-DBDB3	DC-ANT-DBDB3
DC-ANT-DBHG	DC-ANT-DBHG
	76000717
	76000652
	76000642
	76000682
	76000696
	301-9010-02



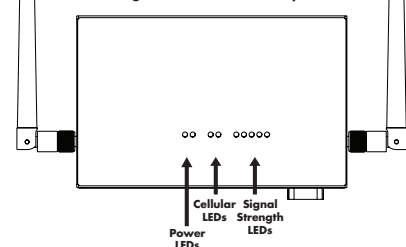
Digi Connect WAN IA - Front



Digi Connect WAN 3G - Back



Digi Connect WAN 3G - Top



DIGI SERVICE AND SUPPORT - You can purchase with confidence knowing that Digi is here to support you with expert technical support and a strong five-year warranty. www.digi.com/support

Digi International

11001 Bren Road E.
 Minnetonka, MN 55343
 U.S.A.
 PH: 877-912-3444
 952-912-3444
 FX: 952-912-4952
 email: info@digi.com

Digi International France

31 rue des Poissonniers
 92200 Neuilly sur Seine
 PH: +33-1-55-61-98-98
 FX: +33-1-55-61-98-99
www.digi.fr

Digi International KK

NES Building South 8F
 22-14 Sakuragaoka-cho,
 Shibuya-ku
 Tokyo 150-0031, Japan
 PH: +81-3-5428-0261
 FX: +81-3-5428-0262
www.digi-intl.co.jp

Digi International (HK) Limited

Suite 1703-05, 17/F,
 K Wah Centre
 191 Java Road
 North Point, Hong Kong
 PH: +852-2833-1008
 FX: +852-2572-9989
www.digi.cn

© 2005-2007 Digi International Inc.

Digi, Digi International, the Digi logo, the When Reliability Matters logo, Digi Connect, Digi Connectware, RealPort and Digi SureLink are trademarks or registered trademarks of Digi International Inc. in the United States and other countries worldwide. All other trademarks are the property of their respective owners.

WHEN
RELIABILITY
 MATTERS™

Digi International, the leader in device networking for business, develops reliable products and technologies to connect and securely manage local or remote electronic devices over the network or via the web. With over 20 million ports shipped worldwide since 1985, Digi offers the highest levels of performance, flexibility and quality.

www.digi.com

91001371
 B2/1207

